

High Pressure Pneumatic Actuators - Double Acting Actuator

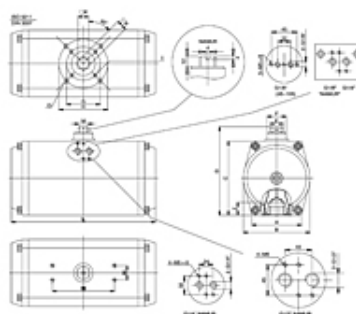


CCW

Air is supplied to Port A forcing the pistons away from each other (towards ends), rotating the drive pinion counter-clockwise and exhausting air out of Port B

CW

Air is supplied to Port B forcing the pistons toward



Results 1 - 20 of 20

Item #	Item Name	Operating Temperature	Operating Temperature with Dry Air Only	Operating Temperature in Special Execution	Air Supply	Pressure	Air Connection	Weight
DA-32	High Pressure Pneumatic Actuators - Double Acting Actuator	0–80 °C	-20–80 °C	-40–150 °C	Minimum 40 psi; Maximum 130 psi	High Pressure	N/A	1.7 lb
DA-45	High Pressure Pneumatic Actuators - Double Acting Actuator	0–80 °C	-20–80 °C	-40–150 °C	Minimum 40 psi; Maximum 130 psi	High Pressure	G 1/8"	2.3 lb
DA-52	High Pressure Pneumatic Actuators - Double Acting Actuator	0–80 °C	-20–80 °C	-40–150 °C	Minimum 40 psi; Maximum 130 psi	High Pressure	G 1/8"	2.4 lb
DA-63	High Pressure Pneumatic Actuators - Double Acting Actuator	0–80 °C	-20–80 °C	-40–150 °C	Minimum 40 psi; Maximum 130 psi	High Pressure	G 1/8"	4.0 lb
DA-75	High Pressure Pneumatic Actuators - Double Acting Actuator	0–80 °C	-20–80 °C	-40–150 °C	Minimum 40 psi; Maximum 130 psi	High Pressure	G 1/8"	4.8 lb

DA-83	High Pressure Pneumatic Actuators - Double Acting Actuator	0–80 °C	-20–80 °C	-40–150 °C	Minimum 40 psi; Maximum 130 psi	High Pressure	G 1/8"	6.3 lb
DA-92	High Pressure Pneumatic Actuators - Double Acting Actuator	0–80 °C	-20–80 °C	-40–150 °C	Minimum 40 psi; Maximum 130 psi	High Pressure	G 1/8"	9.5 lb
DA-105	High Pressure Pneumatic Actuators - Double Acting Actuator	0–80 °C	-20–80 °C	-40–150 °C	Minimum 40 psi; Maximum 130 psi	High Pressure	G 1/8"	13.5 lb
DA-125	High Pressure Pneumatic Actuators - Double Acting Actuator	0–80 °C	-20–80 °C	-40–150 °C	Minimum 40 psi; Maximum 130 psi	High Pressure	NAMUR G 1/4"	19.4 lb
DA-140	High Pressure Pneumatic Actuators - Double Acting Actuator	0–80 °C	-20–80 °C	-40–150 °C	Minimum 40 psi; Maximum 130 psi	High Pressure	NAMUR G 1/4"	26.7 lb
DA-160	High Pressure Pneumatic Actuators - Double Acting Actuator	0–80 °C	-20–80 °C	-40–150 °C	Minimum 40 psi; Maximum 130 psi	High Pressure	NAMUR G 1/4"	44.2 lb
DA-190	High Pressure Pneumatic Actuators - Double Acting Actuator	0–80 °C	-20–80 °C	-40–150 °C	Minimum 40 psi; Maximum 130 psi	High Pressure	NAMUR G 1/4"	83.8 lb
DA-210	High Pressure Pneumatic Actuators - Double Acting Actuator	0–80 °C	-20–80 °C	-40–150 °C	Minimum 40 psi; Maximum 130 psi	High Pressure	NAMUR G 1/4"	99.2 lb
DA-240	High Pressure Pneumatic Actuators - Double Acting Actuator	0–80 °C	-20–80 °C	-40–150 °C	Minimum 40 psi; Maximum 130 psi	High Pressure	NAMUR G 1/4"	139 lb
DA-270	High Pressure Pneumatic Actuators - Double Acting Actuator	0–80 °C	-20–80 °C	-40–150 °C	Minimum 40 psi; Maximum 130 psi	High Pressure	NAMUR G 1/2"	206 lb
DA-300	High Pressure Pneumatic Actuators - Double Acting Actuator	0–80 °C	-20–80 °C	-40–150 °C	Minimum 40 psi; Maximum 130 psi	High Pressure	NAMUR G 1/2"	242 lb
DA-350	High Pressure Pneumatic Actuators - Double Acting Actuator	0–80 °C	-20–80 °C	-40–150 °C	Minimum 40 psi; Maximum 130 psi	High Pressure	NAMUR G 1/2"	410 lb
DA-400	High Pressure Pneumatic Actuators - Double Acting Actuator	0–80 °C	-20–80 °C	-40–150 °C	Minimum 40 psi; Maximum 130 psi	High Pressure	N/A	636 lb
DA-500	High Pressure Pneumatic Actuators - Double Acting Actuator	0–80 °C	-20–80 °C	-40–150 °C	Minimum 40 psi; Maximum 130 psi	High Pressure	N/A	2160 lb

DA-600	High Pressure Pneumatic Actuators - Double Acting Actuator	0-80 °C	-20-80 °C	-40-150 °C	Minimum 40 psi; Maximum 130 psi	High Pressure	N/A	4354 lb
--------	--	---------	-----------	------------	---------------------------------------	---------------	-----	---------

Results 1 - 20 of 20