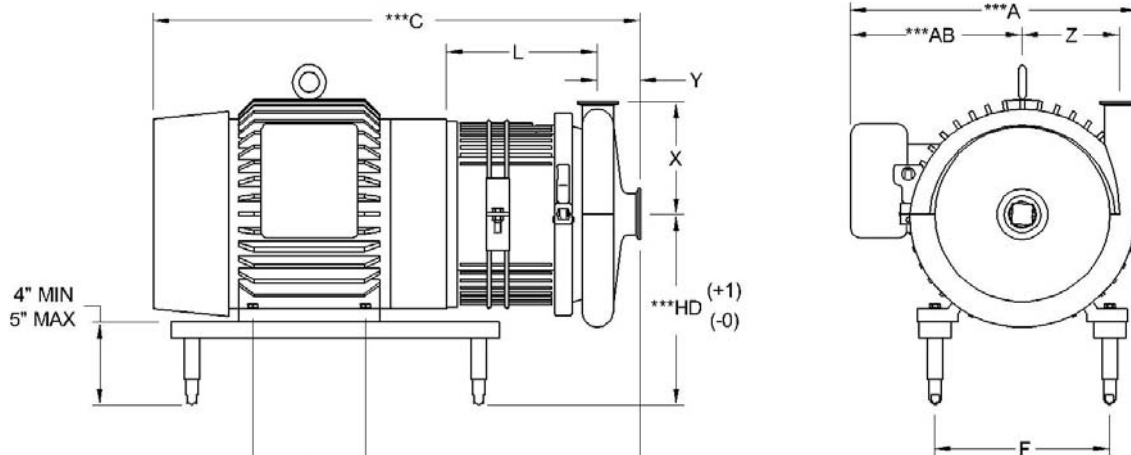


INSTALLATION



PUMP DIMENSIONS

PUMP MODEL	SUCTION	DISCHARGE	*X	*Y	**X	**Y	Z
C100	1.500	1.000	3.500	1.554	-----	-----	1.453
C114	1.500	1.500	3.625	1.594	3.875	1.844	2.625
C216	2.000	1.500	4.500	1.906	4.750	2.156	3.688
C218	2.000	1.500	5.500	1.719	5.750	1.969	4.750
C328	3.000	2.000	5.500	2.219	5.750	2.719	4.750

PUMP AND MOTOR DIMENSIONS WITH "WASHDOWN" TOTALLY ENCLOSED BALDOR MOTORS

PUMP MODEL	FRAME	A	*C	**C	HD	AB	*J	E	F	L
C100	56C	8.313	13.312	-----	7.500	5.000	6.875	3.000	4.875	2.750
C114	56C	8.313	16.821	17.071	7.500	5.000	10.375	3.000	4.875	6.219
	143 TC	8.563	17.813	18.063	7.500	5.250	10.844	4.000	5.500	6.219
	145 TC	8.563	19.848	18.063	7.500	5.250	10.688	5.000	5.500	6.219
	182 TC	9.813	20.938	21.180	8.500	5.875	12.219	4.500	7.500	6.781
	184 TC	9.813	23.790	24.915	8.500	5.875	12.000	5.500	7.500	6.781
C216	56C	8.313	16.976	17.226	7.500	5.000	10.531	3.000	4.875	6.062
	143 TC	8.563	17.968	18.223	7.500	5.250	10.844	4.000	5.500	6.062
	145 TC	8.563	20.003	20.253	7.500	5.250	10.844	5.000	5.500	6.062
	182 TC	9.813	21.157	21.399	8.500	5.875	12.219	4.500	7.500	6.688
	184 TC	9.813	24.009	24.259	8.500	5.875	12.219	5.500	7.500	6.688
	213 TC	12.156	26.487	26.624	9.250	7.375	13.969	5.500	8.500	7.813
	215 TC	12.156	27.864	28.114	9.250	7.375	13.969	7.000	8.500	7.813
	254 TC	16.094	28.533	28.783	10.250	9.625	14.594	8.250	10.000	8.437
	256 TC	16.094	30.163	30.413	10.250	9.625	14.594	10.000	10.000	8.437
C218	143 TC	8.563	18.036	18.281	7.500	5.250	10.281	4.000	5.500	6.312
	145 TC	8.563	20.066	18.286	7.500	5.250	10.281	5.000	5.500	6.312
	182 TC	9.813	21.211	20.941	8.500	5.875	12.281	4.500	7.500	6.938
	184 TC	9.813	24.071	24.321	8.500	5.875	12.281	5.500	7.500	6.938
	213 TC	12.156	25.686	25.936	9.250	7.375	13.281	5.500	8.500	7.312
	215 TC	12.156	27.176	27.426	9.250	7.375	13.281	7.000	8.500	7.312
	254 TC	16.094	28.096	28.346	10.250	9.625	14.157	8.250	10.000	8.188
	256 TC	16.094	29.726	29.977	10.250	9.625	14.157	10.000	10.000	8.188
	284 TC	20.438	33.916	34.166	11.000	13.125	15.281	9.500	11.000	8.812
	286 TC	20.438	33.916	34.166	11.000	13.125	15.281	11.000	11.000	8.812
C328	182 TC	9.813	22.024	22.524	8.500	5.875	13.094	4.500	7.500	7.250
	184 TC	9.813	24.884	25.384	8.500	5.875	13.094	5.500	7.500	7.250
	213 TC	12.156	26.499	26.999	9.250	7.375	14.094	5.500	8.500	7.625
	215 TC	12.156	29.664	28.489	9.250	7.375	14.094	7.000	8.500	7.625
	254 TC	16.094	28.909	29.409	10.250	9.625	15.000	8.250	10.000	8.500
	256 TC	16.094	30.539	31.039	10.250	9.625	15.000	10.000	10.000	8.500
	284 TC	20.438	34.729	35.229	11.000	13.125	16.094	9.500	11.000	9.125
	286 TC	20.438	34.729	35.229	11.000	13.125	16.094	11.000	11.000	9.125
	324 TC	22.375	37.311	37.811	12.000	14.125	17.156	10.500	12.500	9.812
	326 TC	22.375	37.311	37.811	12.000	14.125	17.156	12.000	12.500	9.812

* WITH CLAMP CONNECTIONS (STANDARD)
 ** WITH THREADED BEVEL-SEAT CONNECTIONS
 *** DIMENSIONS ARE FOR BALDOR WASHDOWN MOTORS
 OTHER MOTOR MANUFACTURERS DIMENSIONS MAY VARY

ALL DIMENSIONS IN INCHES.
 DIMENSIONS ARE APPROXIMATE AND FOR GUIDANCE ONLY.
 NOTES: 1. THESE DIMENSION ARE FOR PUMPS USING NEMA STANDARD "C" FLANGE MOTORS

- Remove the water cascade attachment from the adapter, if included. Remove the rubber shaft deflector by pulling it straight off the stub shaft. Examine it for tearing, loose fit, or other defects that would allow liquid leakage into the motor along the shaft. (Figure 17)

WARNING

TO AVOID SERIOUS INJURY, DO NOT INSTALL OR SERVICE PUMP UNLESS ALL POWER IS OFF AND LOCKED OUT.

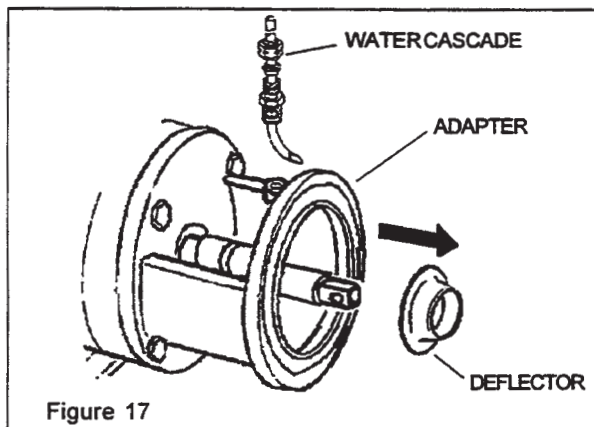


Figure 17

REPLACING MOTOR

To replace or service the motor, disassemble the pump as outlined in DISASSEMBLY steps 1 through 11.

- Remove the bolts that secure the adapter to the motor frame and remove the adapter. (Figure 18)

CAUTION

The stub shaft has four sharp diagonal grooves in the end. Wear gloves to prevent injuries to hands.

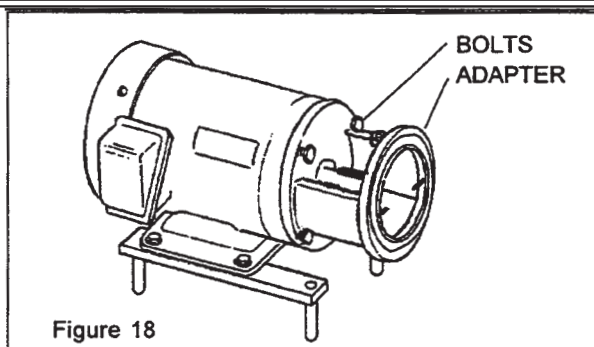


Figure 18

- Loosen the two (2) set screws securing the stub-shaft to the motor shaft. Carefully remove the stub-shaft. The stub-shaft is a tight fit, but can be removed by applying pressure around the periphery of the shaft with a pry-bar. (Figure 19)

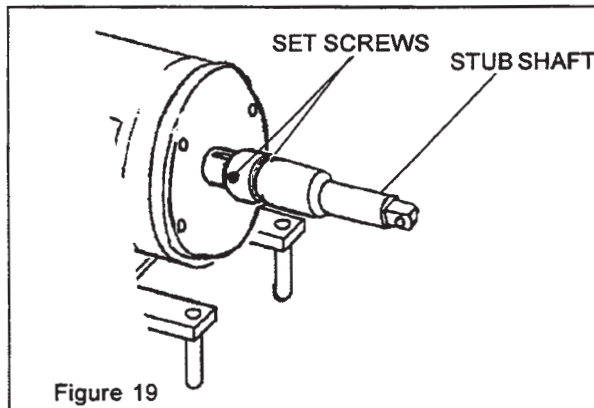


Figure 19

NOTE: Examine the shaft sealing surfaces for nicks or scratches which can cause excessive o-ring wear or leaking.

- Remove the bolts securing the motor to the mounting brackets. Bolt the new motor to the mounting brackets. (Figure 20)

NOTE: Motor maintenance, repair, and wiring are not covered in this manual. For specific information contact the motor manufacturer.

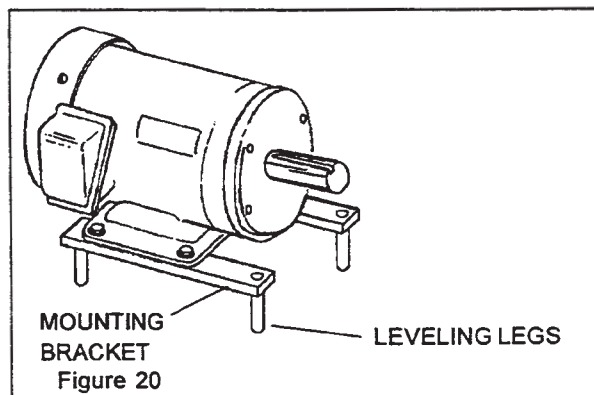


Figure 20

If required, level the motor by rotating the adjustable legs individually. (Figure 3 & 20)

MAINTENANCE

INSTALL ADAPTER-STUB SHAFT ADJUSTMENT

1. Mount the adapter to the motor with the drain cavity at the bottom. Insert the four bolts to secure the adapter to the motor. (Figure 21)
2. Install the key in the motor shaft.
3. Place the stub-shaft assembly onto the motor shaft. Do not tighten the shaft set screws.
4. Install the backplate on the adapter and rotate until the backplate pins engage the adapter pins, assuring solid contact of the backplate to the adapter. (Figure 21)
5. Rotate the stub shaft until the impeller retaining hole is in a horizontal position. Insert the impeller retainer pin, and center it in the stub-shaft. Slide the impeller on the shaft. Hold the impeller tight against the shoulder in the shaft and rotate the shaft one-quarter turn until the impeller pin engages with the impeller. (Figure 22)

STUB SHAFT ADJUSTMENT

1. Push the stub-shaft/impeller assembly toward the motor until the impeller strikes the front face of the backplate.
2. Move the stub-shaft away from the motor shaft to allow 1/16-inch maximum clearance between the rear face of the impeller and the front (inside) face of the backplate. (See Figure 22)
3. Tighten the two set screws on the stub-shaft.
4. Remove the impeller retainer pin, impeller, and the backplate.
5. Slide the deflector (large diameter end first) onto the shaft until it seats in the shaft groove. (Figure 23)

NOTE: If the deflector cannot be forced on with the fingers, use a blunt tool to tap it evenly into place.

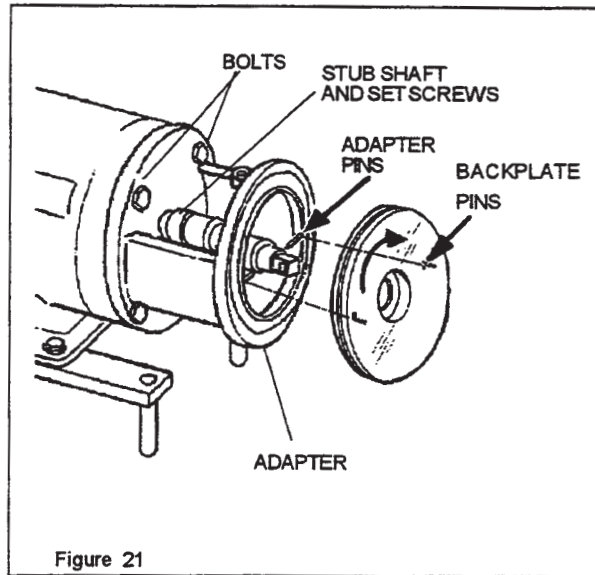


Figure 21

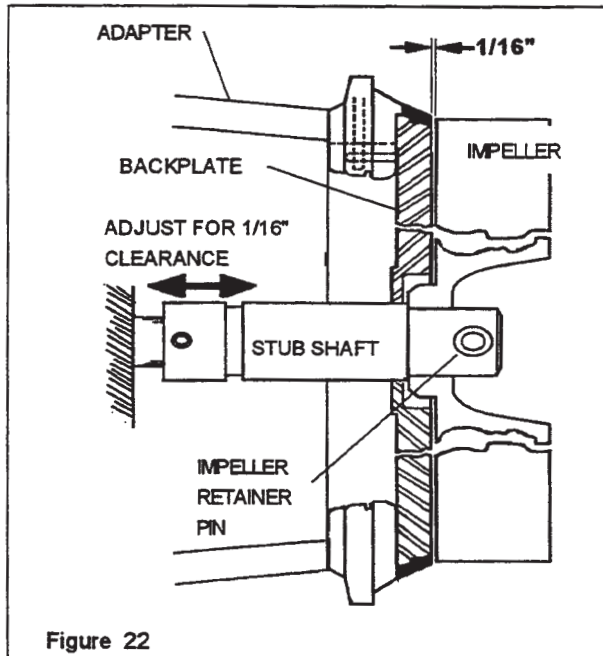


Figure 22

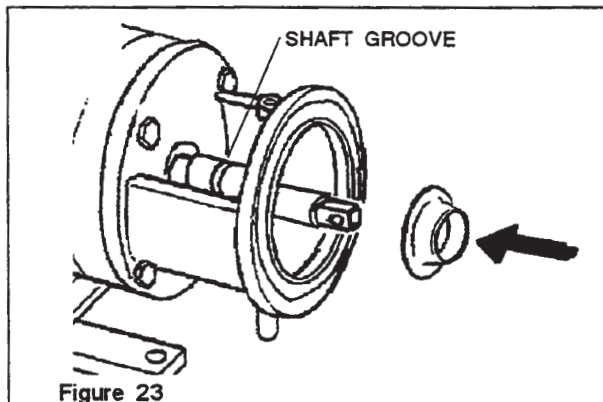


Figure 23

MAINTENANCE

DRIVE COLLAR ADJUSTMENT

(Models TF-C114 through TF-C328)

- Slide the seal drive collar onto the stub shaft as shown in Figure 24.
Use the "A" dimension in the SEAL CHART to properly locate the drive collar on the stub shaft. Tighten the set screws to secure in place.

NOTE: TF-C100 pump does not require drive collar.

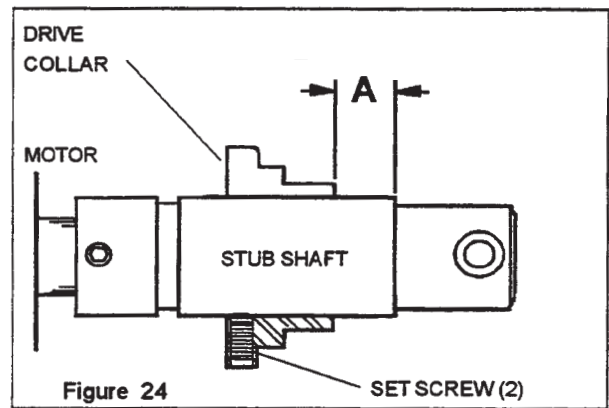


Figure 24

SEAL CHART for figure 24

MODEL	A
TF-C114	9/16"
TF-C216	9/16"
TF-C218	9/16"
TF-C328	9/16"

- Assemble the spring, seal cup, o-ring, and carbon seal, and install as a unit. Make sure the slot in the seal cup aligns with the pin on the shaft. (Figure 25) Gentle pressure on the o-ring will overcome resistance on the shaft.

NOTE: Do not lubricate seals with any type of oil or grease, the seal faces will be lubricated by the product being pumped.

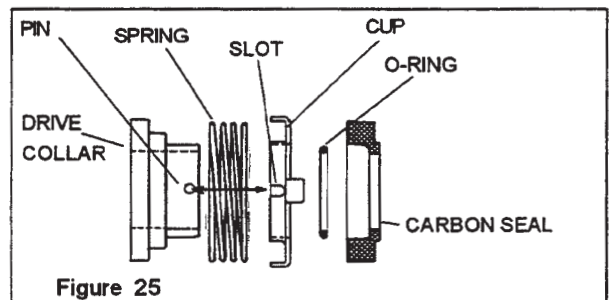


Figure 25

- Assemble the gasket to the backplate. Install the backplate on the adapter. Make sure the seal cup slot is engaged with the pin on the drive collar. (Figure 25)
- Rotate the backplate until the backplate pins engage the adapter pins. (Figure 25)
- Rotate the shaft until the pin hole in the end is in a horizontal position. Insert the impeller pin, center it in the shaft end, and slide the impeller on the shaft.
Hold the impeller tight against the stub shaft and rotate the shaft one-fourth turn until the impeller pin drops and secures the impeller. (Figure 26)

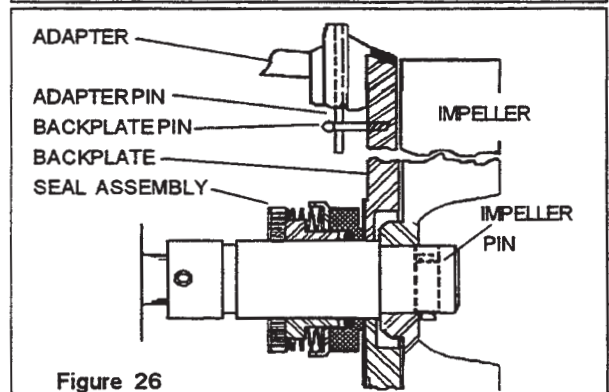


Figure 26

- Place the casing over the impeller/backplate, close and tighten the clamp. (Figure 27)
- Assemble the cascade water fitting, if included. Install the seal guard and tighten in place. Assemble the suction line and the discharge line to the casing.

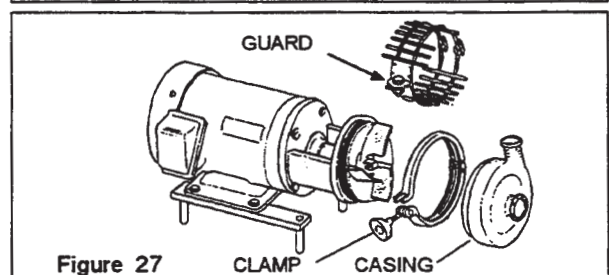


Figure 27

NOTE: Check for strain or misalignment of piping to the casing. Re-adjust the casing ports and/or entire motor leveling as necessary.

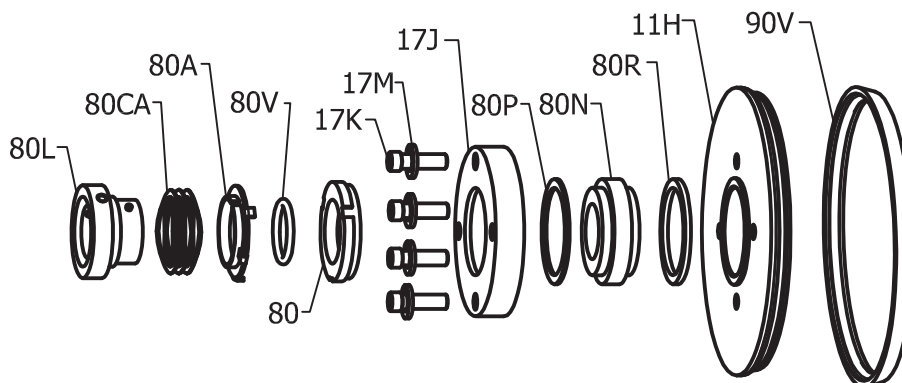


FIGURE 28

DG-SEAL

KEY	C114	C216	C218 * 328	QTY.	DESCRIPTION	MATERIAL
11H	564911H	566911H	568911H	1	BACKPLATE	316L SS
*80R	564980R	566980R	568980R	1	INBOARD GASKET	1/8" PTFE
*80NSC	564980N-SC	566980N-SC	568980N-SC	1	STATIONARY SEAT	SILICONE CARBIDE
*80P	564980P	566980P	568980P	1	OUTBOARD GASKET	1/16" PTFE
17J	564917J	566917J	568917J	1	GLAND RING	304 SS
17K	564917K	566917K	568917K	4	BOLT/SCREW	SS
*80	564980	566980	568980	1	ROTATING CARBON SEAL	CARBON
*80V	564980V	566980V	568980V	1	O-RING SEAL	FKM
80A	564980A	566980A	568980A	1	CUP	304 SS
*80CA	564980CA	566980CA	568980CA	1	SPRING	SS
80L	564980L	566980L	568980L	1	DRIVE COLLAR	304 SS
17M	564917M	566917M	568917M	4	LOCK WASHER	SS
*90V	564990V	566990V	568990V	1	CASING GASKET	FKM
*24	564924	566924	568924	1	IMPELLER RETAINER PIN	316L SS

Disassembly

At each step in the disassembly, process parts should be inspected for nicks, cuts, abrasions, and other wear. Replace parts if necessary. Care should be taken to protect all sealing surfaces from being damaged during disassembly.

- Disconnect suction and discharge piping from pump casing.
- Remove seal guard and casing.
- Remove the impeller.
- Remove the backplate.
- Remove casing gasket from the backplate.
- Remove the carbon seal, seal cup, and spring from the stub shaft.
- Remove the gland ring, seal seat, and PTFE gaskets by removing the four cap screws.

Reassembly

Setting the Drive Collar - Measuring Method

1. Assemble the PTFE gaskets, seal seat, gland ring, and secure to the back plate by uniformly tightening the capscrews.

Note: The PTFE inboard (80R) and outboard (80P) gaskets are different thicknesses. The thicker gasket (80R) must always be installed on the impeller side to prevent contact between the impeller hub and the stationary seal.

2. Slide the drive collar onto the stub shaft.
3. Install the backplate and the casing gasket.
4. Install the casing and tighten the casing clamp.
5. Scribe a mark on the stub shaft behind the backplate.
6. Set the drive collar to "A" dimension in the seal chart and tighten the drive collar setscrew. (Figure 30)
7. Remove the casing and backplate.
8. Assemble the spring, seal cup, o-ring, and carbon seal onto the drive collar. *The pin on the drive collar must align with the slot in the cup.*
9. Slide the backplate onto the stub shaft. Position the impeller retaining pin in the center of the stub shaft hole and install the impeller. Push the impeller against the stub shaft and rotate the stub shaft until the impeller retaining pin falls and secure the impeller.
10. Check the impeller hub and seal face to ensure there is a clearance between them before installing the casing.
11. Reset the seal drive collar if required. When the drive collar is positioned correctly and the seal components are properly installed, the shaft should rotate freely by hand.
12. Assemble the casing gasket, casing, and casing clamp. Use a soft rubber mallet to line up the casing. Tighten the casing clamp and install the seal guard.

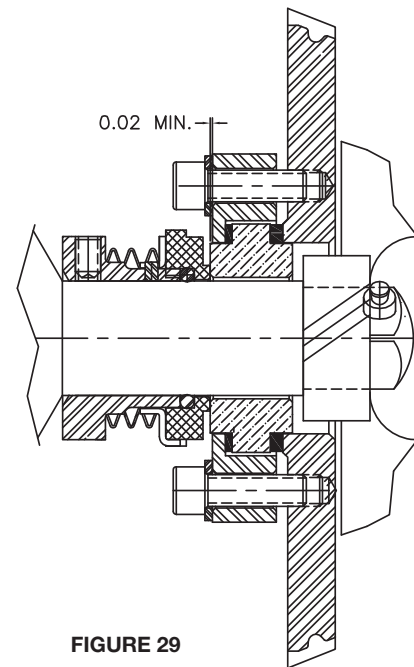


FIGURE 29

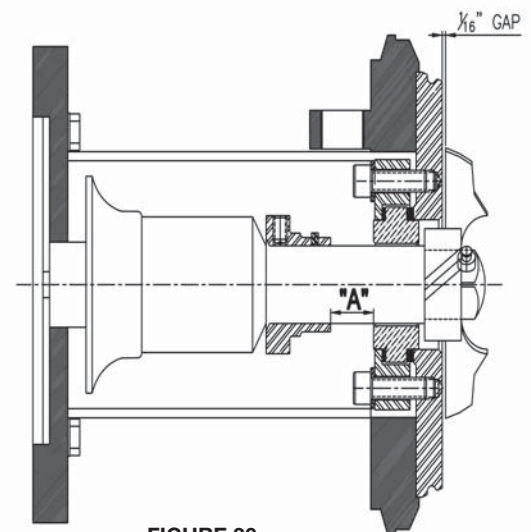


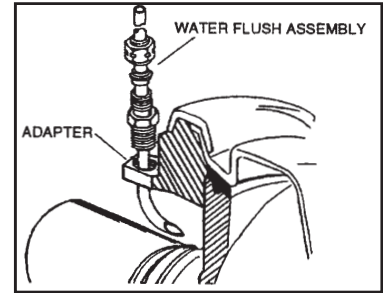
FIGURE 30

SEAL CHART

MODEL	A
TF-C114	5/16"
TF-C216	5/16"
TF-C218	5/16"
TF-C328	5/16"

SPARE PARTS

WATER CASCADE ASSEMBLY (#5649127) (Consists of threaded attaching ferrule, compression fitting with nut, and 1/4" diameter stainless water pipe.)



REPAIR KITS

To maintain continuous uninterrupted operation of your pump, the following kits are recommended.

“D” SEAL KITS

TF-C100			TF-C114			TF-C216			TF-C218/C328		
	BUNA	FKM		BUNA	FKM		BUNA	FKM		BUNA	FKM
Kit #1	5629K-1	5629V-1	Kit #1	5649K-1	5649V-1	Kit #1	5669K-1	5669V-1	Kit #1	5689K-1	5689V-1
Kit #2	5629K-2	5629V-2	Kit #2	5649K-2	5649V-2	Kit #2	5669K-2	5669V-2	Kit #2	5689K-2	5689V-2
Kit #3	5629K-3	5629V-3	Kit #3	5649K-3	5649V-3	Kit #3	5669K-3	5669V-3	Kit #3	5689K-3	5689V-3

Kit #1 (Consists of 1 - Carbon Seal, 1 - Casing Gasket, 1 - O-Ring, and 1 - Retaining Pin)

Kit #2 (Consists of 3 - Carbon Seals, 3 - Casing Gaskets, and 3 - O-Rings)

Kit #3 (Consists of 1 - Carbon Seal, 1 - Spring, 1 - Cup, and 1 - O-Ring)

“DG” SEAL KITS

TF-C114 KIT			
5649K-1DG			
CONSISTS OF:	KEY #	QTY.	DESCRIPTION
564980	80	1	Carbon Seal, Rotating
564924	24	1	Impeller Retainer Pin
564980N-SC	80NSC	1	Stationary Seat, Silicone Carbide
564980P	80P	1	PTFE Gasket, Outboard
564980R	80R	1	PTFE Gasket, Inboard
564980V	80V	1	Seal, O-Ring FKM
564990V	90V	1	Casing Gasket, FKM

TF-C216 KIT			
5669K-1DG			
CONSISTS OF:	KEY #	QTY.	DESCRIPTION
566980	80	1	Carbon Seal, Rotating
566924	24	1	Impeller Retainer Pin
566980N-SC	80NSC	1	Stationary Seat, Silicone Carbide
566980P	80P	1	PTFE Gasket, Outboard
566980R	80R	1	PTFE Gasket, Inboard
566980V	80V	1	Seal, O-Ring FKM
566990V	90V	1	Casing Gasket, FKM

TF-C218/328 KIT			
5989K-1DG			
CONSISTS OF:	KEY #	QTY.	DESCRIPTION
568980	80	1	Carbon Seal, Rotating
568924	24	1	Impeller Retainer Pin
568980N-SC	80NSC	1	Stationary Seat, Silicone Carbide
568980P	80P	1	PTFE Gasket, Outboard
568980R	80R	1	PTFE Gasket, Inboard
568980V	80V	1	Seal, O-Ring FKM
568990V	90V	1	Casing Gasket, FKM

“E” SEAL KITS

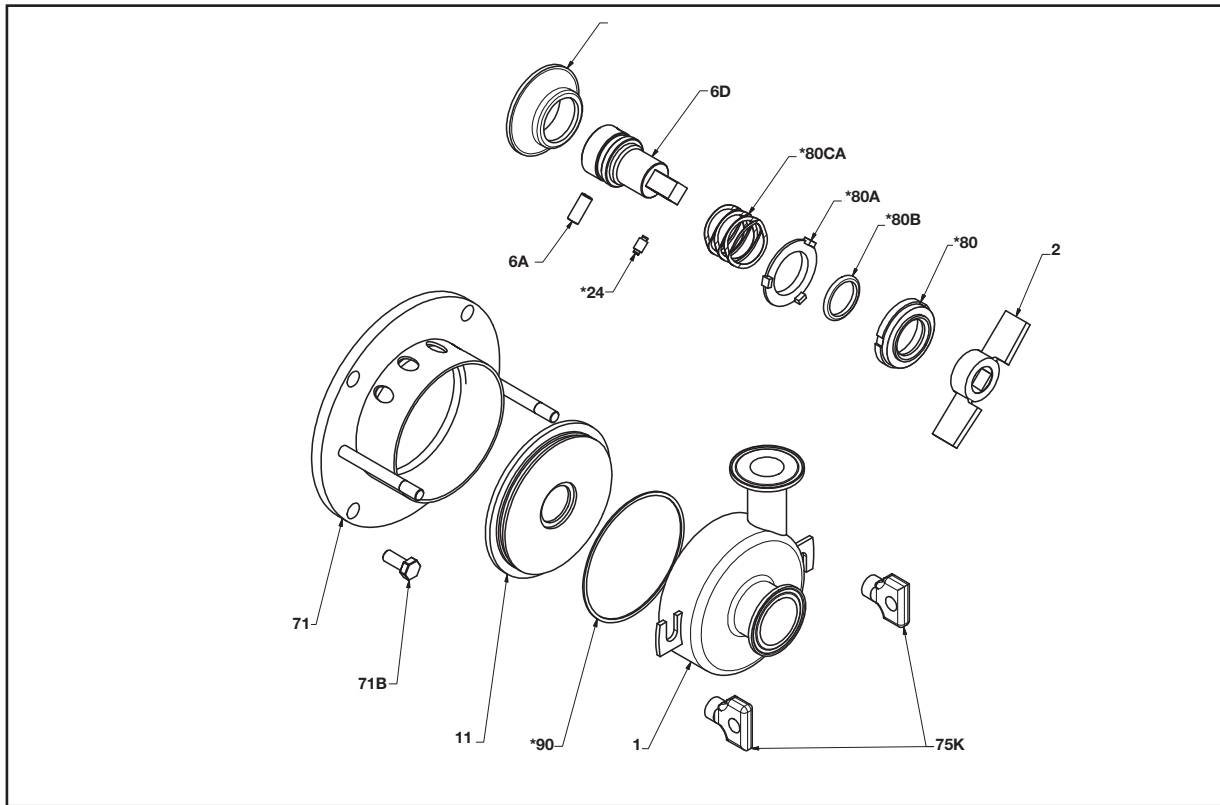
TF-C114 KIT			
5649EK-1			
CONSISTS OF:	KEY #	QTY.	DESCRIPTION
564980	80	2	Carbon Seal
564980V	80V	2	Seal O-Ring FKM
564980G	80G	2	Cup (E Seal)
564917B	17B	1	O-Ring FKM
564983E	83E	1	O-Ring FKM
564980H	80H	1	Spring (E Seal)
564990V	90V	1	Casing Gasket FKM

TF-C216 KIT			
5669EK-1			
CONSISTS OF:	KEY #	QTY.	DESCRIPTION
566980	80	2	Carbon Seal
566980V	80V	2	Seal O-Ring FKM
566980G	80G	2	Cup (E Seal)
566917B	17B	1	O-Ring FKM
566983E	83E	1	O-Ring FKM
566980H	80H	1	Spring (E Seal)
566990V	90V	1	Casing Gasket FKM

TF-C218/328 KIT			
5989EK-1			
CONSISTS OF:	KEY #	QTY.	DESCRIPTION
568980	80	2	Carbon Seal
568980V	80V	2	Seal O-Ring FKM
568980G	80G	2	Cup (E Seal)
568917B	17B	1	O-Ring FKM
568983E	83E	1	O-Ring FKM
568980H	80H	1	Spring (E Seal)
568990V	90V	1	Casing Gasket FKM

PARTS LIST

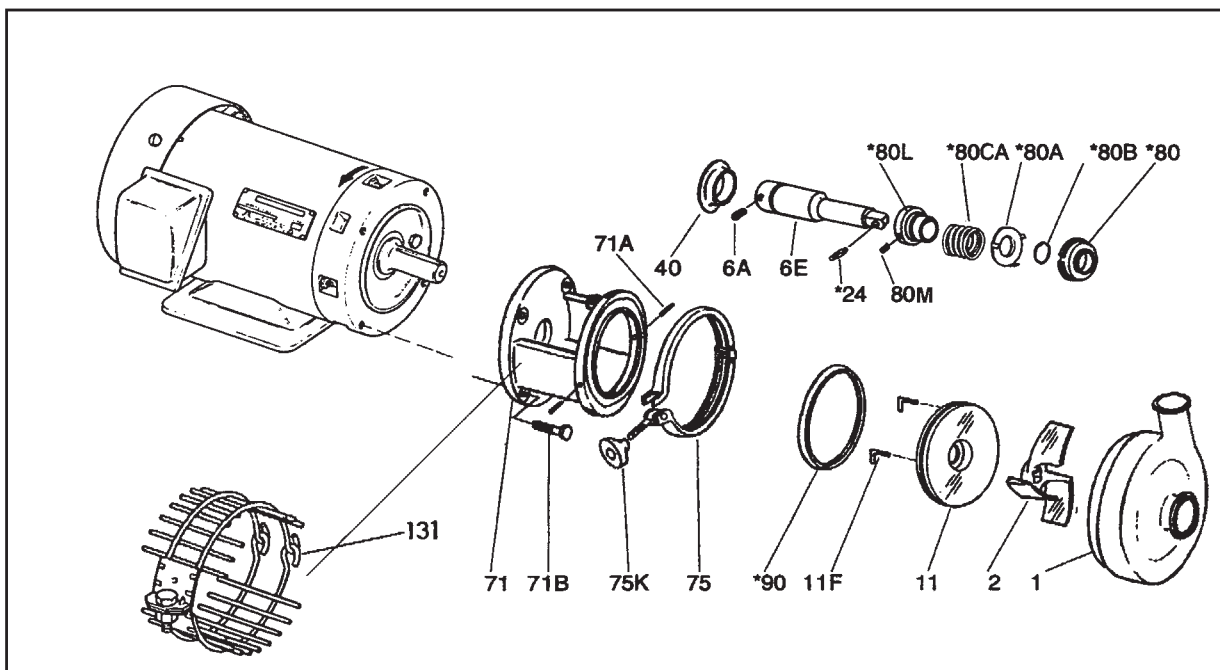
TF-C100



KEY	PART NO.	QTY.	DESCRIPTION
1	563911510	1	Casing 1.5" x 1"
2	56392	1	Impeller 3.68"
6A	56396A	2	Shaft Set Screw
6D	5639605	1	Stub Shaft-56C Frame
11	562911	1	Backplate
*24	564924	1	Impeller Retainer Pin
40	564940	1	Deflector
71	56397156	1	Adapter
71B	563971B	4	Adapter Mounting Bolt
75K	563971K	2	Wing Nut

KEY	PART NO.	QTY.	DESCRIPTION
*80	563980	1	Carbon Steel
*80A	564980A	1	Cup
*80B	563980B	1	Seal O-Ring, Buna
*80CA	563980CA	1	Spring
*90	562990	1	Casing Gasket, Buna

*Spare parts recommended
 See page 25 for spare part kits
 EPDM and FKM elastomers available upon request

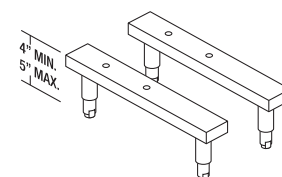


KEY	PART NO.	QTY.	DESCRIPTION
1	564911515	1	Casing 1.5"x1.5"
1	564912015	1	Casing 2"x1.5"
2	56492	1	Impeller 4"
6A	56496A	2	Shaft Set Screw, 56C
6E	56496E56	1	Stub Shaft-56C Frame
6E	56496E14	1	Stub Shaft 14T
6E	56496E18	1	Stub Shaft 18T
11	564911	1	Backplate
11F	564911F	2	Backplate Pin
*24	564925	1	Impeller Retainer Pin
40	564940	1	Deflector, 56C-14T Frame
40	566940	1	Deflector, 18T Frame
71	56497156S	1	Adapter, 56C-14T Frame
71	56497118S	1	Adapter 18T Frame
71A	564971A	2	Adapter Pin
71B	564971B56	4	Adapter Mounting Screw, 56C
71B	564971B14	4	Adapter Mounting Screw, 14T
71B	564971B18	4	Adapter Mounting Screw, 18T

KEY	PART NO.	QTY.	DESCRIPTION
75	564975	1	Clamp Assembly
75K	329901	1	Wing Nut
*80	564980	1	Carbon Seal
*80A	564980A	1	Cup
*80B	564980B	1	Seal O-Ring, Buna
*80CA	564980CA	1	Spring
80L	564980L	1	Drive Collar
80M	564980M	1	Drive Collar Set Screw
*90	564990	1	Casing Gasket, Buna
131	5649131	1	Seal Guard Assembly - 56C & 14T Frame
131	564913118	1	Seal Guard Assembly - 18T Frame

ADJUSTABLE LEG KITS
(304 STAINLESS STEEL)

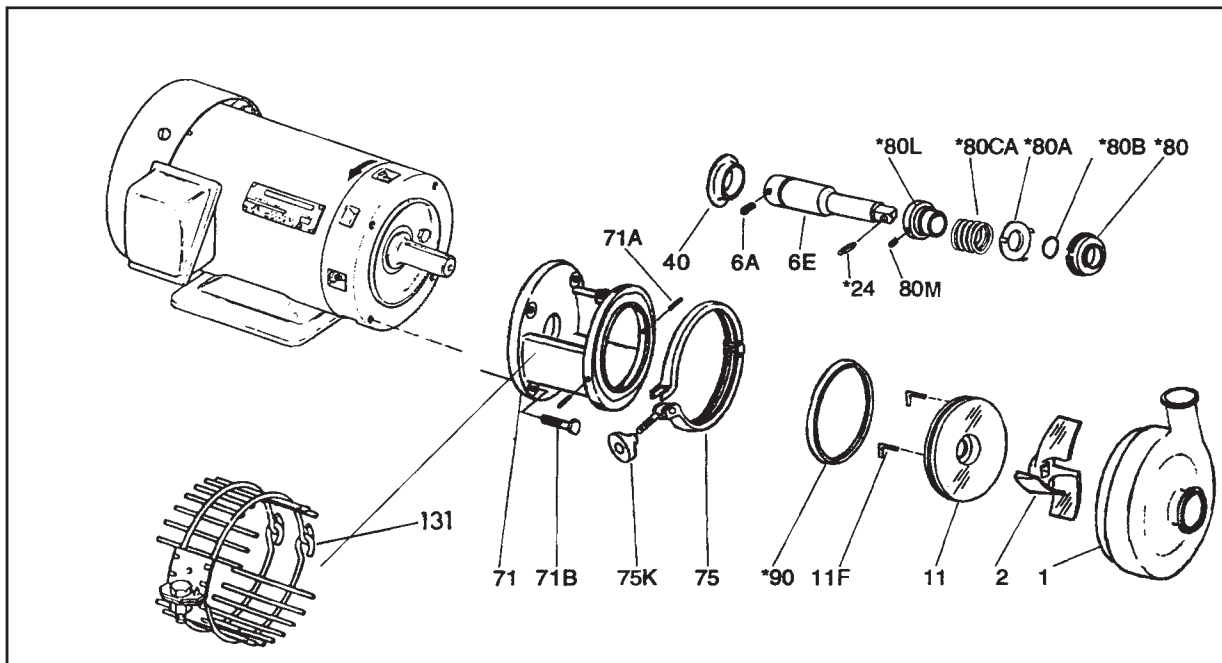
PART NUMBER	FRAME SIZE
56S56C	56C
56S140TC	143/145
56S180TC	182/184
56S210TC	213/215
56S250TC	254/256
56S280TC	284/286
56S320TC	324/326



*Spare parts recommended
See page 25 for spare part kits
EPDM and FKM elastomers available upon request

PARTS LIST

TF-C216



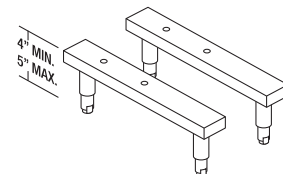
KEY	PART NO.	QTY.	DESCRIPTION
1	566912015	1	Casing 2"x1.5"
1	566912515	1	Casing 2.5"x1.5"
2	56692	1	Impeller 6"
6A	56696A	2	Shaft Set Screw – 14T, 21T, 25T
6A	56696A56	1	Shaft Set Screw – 56C
6A	56496A	1	Shaft Set Screw – 18T
6E	56696E56	1	Stub Shaft – 56C Frame
6E	56696E14	1	Stub Shaft - 14T Frame
6E	56696E18	1	Stub Shaft – 18T Frame
6E	56696E21	1	Stub Shaft – 21T Frame
6E	56696E25	1	Stub Shaft – 25T Frame
11	566911	1	Backplate
11F	564911F	2	Backplate Pin
*24	566924	1	Impeller Retainer Pin
40	566940	1	Deflector, 56C, 14T, 18T Frame
40	56694021	1	Deflector, 21T Frame
40	56694025	1	Deflector, 25T Frame
71	566971S	1	Adapter, 56C & 14T Frame
71	56697118S	1	Adapter 18T Frame
71	56697121S	1	Adapter 21T Frame
71	56697125S	1	Adapter 25 T Frame
71A	564971A	2	Adapter Pin
71B	566971B56	4	Adapter Mounting Screw, 56C, 14T Frame
71B	566971B	4	Adapter Mounting Screw, 18T, 21T, 25T Frame
75	566975	1	Clamp Assembly

KEY	PART NO.	QTY.	DESCRIPTION
75K	329901	1	Wing Nut
*80	566980	1	Carbon Seal
*80A	566980A	1	Cup
*80B	566980B	1	Seal O-Ring, Buna
*80CA	566980CA	1	Spring
80L	566980L	1	Drive Collar
80M	566980M	1	Drive Collar Set Screw
*90	566990	1	Casing Gasket, Buna
131	5669131	1	Seal Guard Assembly 56C-14T Frame
131	566913118	1	Seal Guard Assembly – 18T
131	566913121	1	Seal Guard Assembly – 21T & 25T

ADJUSTABLE LEG KITS

(304 STAINLESS STEEL)

PART NUMBER	FRAME SIZE
56S56C	56C
56S140TC	143/145
56S180TC	182/184
56S210TC	213/215
56S250TC	254/256
56S280TC	284/286
56S320TC	324/326

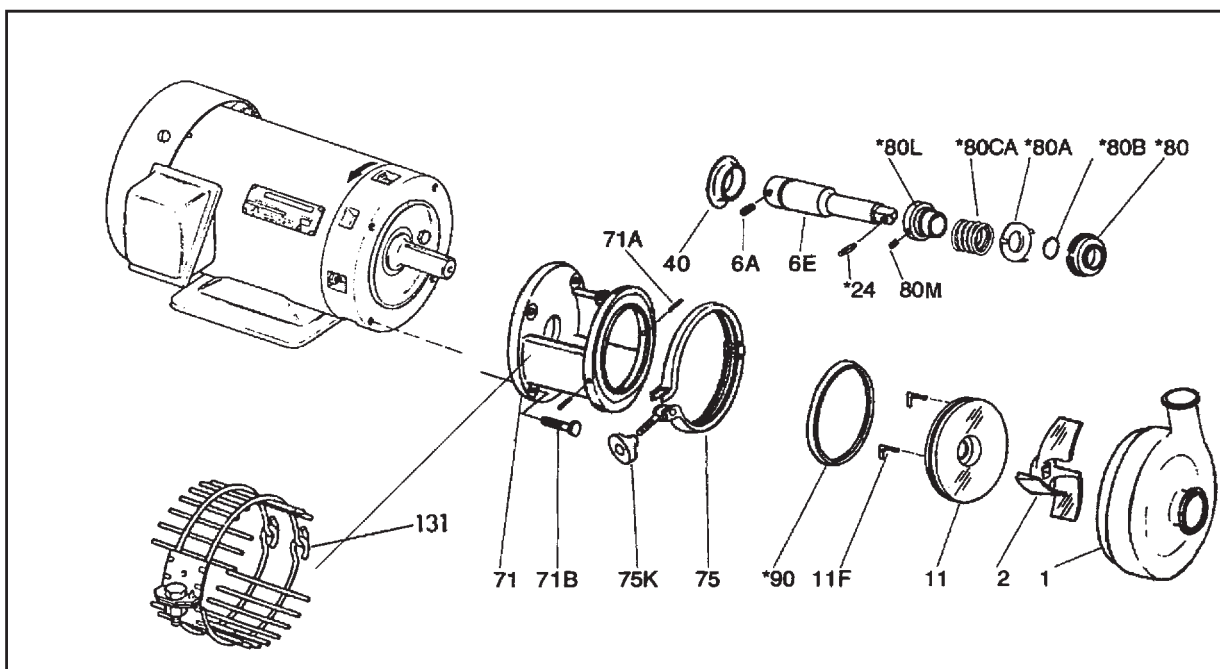


*Spare parts recommended
See page 25 for spare part kits

EPDM and FKM elastomers available upon request

PARTS LIST

TF-C218

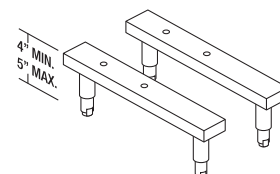


KEY	PART NO.	QTY.	DESCRIPTION
1	568912015	1	Casing, C218, 2"x1.5"
1	568913015	1	Casing, C218, 3"x1.5"
2	56892	1	Impeller 8"
6A	56896A	2	Shaft Set Screw
6E	56896E14	1	Stub Shaft – 14T Frame
6E	56896E18	1	Stub Shaft – 18T Frame
6E	56896E21	1	Stub Shaft – 21T Frame
6E	56896E25	1	Stub Shaft – 25T Frame
6E	56896E28	1	Stub Shaft – 28T Frame
11	568911	1	Backplate
11F	564911F	2	Backplate Pin
*24	568924	1	Impeller Retainer Pin
40	56894014	1	Deflector, 14T & 18T Frame
40	56894021	1	Deflector, 21T & 25T Frame
40	56894028	1	Deflector, 28T Frame
71	56897114S	1	Adapter, 14T Frame
71	56897118S	1	Adapter, 18T Frame
71	56897121S	1	Adapter, 21T Frame
71	56897125S	1	Adapter, 25T Frame
71	56897128S	1	Adapter, 28T Frame
71A	564971A	2	Adapter Pin
71B	568971B14	4	Adapter Mounting Screw, 14T Frame

KEY	PART NO.	QTY.	DESCRIPTION
71B	568971B	4	Adapter Mounting Screw, 18T, 21T, 25T & 28T Frame
75	568975	1	Clamp Assembly
75K	329901	1	Wing Nut
*80	568980	1	Carbon Seal
*80A	568980A	1	Cup
*80B	568980B	1	Seal O-Ring, Buna
*80CA	568980CA	1	Spring
80L	568980L	1	Drive Collar
80M	566980M	1	Drive Collar Set Screw
*90	568990	1	Casing Gasket, Buna
131	568913114	1	Seal Guard Assembly – 14T
131	568913118	1	Seal Guard Assembly – 18T
131	568913121	1	Seal Guard Assembly – 21T
131	568913125	1	Seal Guard Assembly – 25T
131	568913128	1	Seal Guard Assembly – 28T

ADJUSTABLE LEG KITS (304 STAINLESS STEEL)

PART NUMBER	FRAME SIZE
56S56C	56C
56S140TC	143/145
56S180TC	182/184
56S210TC	213/215
56S250TC	254/256
56S280TC	284/286
56S320TC	324/326



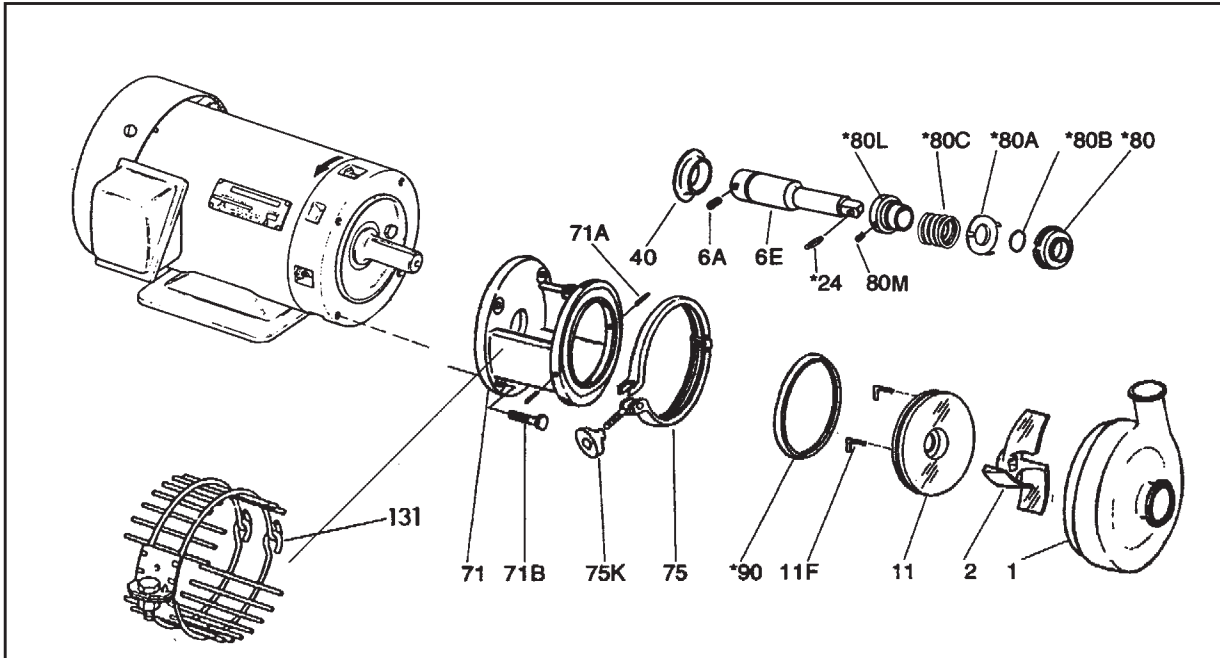
*Spare parts recommended

See page 25 for spare part kits

EPDM and FKM elastomers available upon request

PARTS LIST

TF-C328

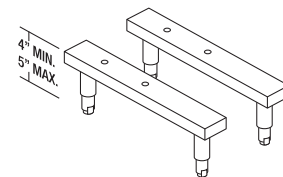


KEY	PART NO.	QTY.	DESCRIPTION
1	568913020	1	Casing, C328, 3"x2"
1	568914020	1	Casing, C328, 4"x2"
2	568923	1	Impeller 8"
6A	56896A	2	Shaft Set Screw
6E	56896E14S	1	Stub Shaft 14T Frame
6E	56896E18S	1	Stub Shaft 18T Frame
6E	56896E21S	1	Stub Shaft 21T Frame
6E	56896E25S	1	Stub Shaft 25T Frame
6E	56896E28S	1	Stub Shaft 28T Frame
6E	56896E32	1	Stub Shaft 32T Frame
11	568911	1	Backplate
11F	564911F	1	Backplate Pin
*24	568924	1	Impeller Retainer Pin
40	568940	1	Deflector, 14T & 18T Frame
40	56894021	1	Deflector, 21T & 25T Frame
40	56894028	1	Deflector, 28T Frame
40	56894032	1	Deflector, 32T Frame
71	56897114	1	Adapter, 14T Frame
71	56897118	1	Adapter, 18T Frame
71	56897121	1	Adapter, 21T Frame
71	56897125	1	Adapter, 25T Frame
71	56897128	1	Adapter, 28T Frame
71	56897132	1	Adapter, 32T Frame
71A	564971A	2	Adapter Pin
71B	568971B14	4	Adapter Mounting Bolt, 14T Frame
71B	568971B	4	Adapter Mounting Bolt, 18T, 21T, 25T, 28T Frame

KEY	PART NO.	QTY.	DESCRIPTION
75	568975	1	Clamp Assembly
75K	329901	1	Wing Nut
80	568980	1	Carbon Seal
*80A	568980A	1	Cup
*80B	568980B	1	Seal O-Ring, Buna
*80CA	568980CA	1	Spring
80L	568980L	1	Drive Collar
80M	566980M	1	Drive Collar Set Screw
*90	568990	1	Casing Gasket, Buna
131	568913114	1	Seal Guard Assembly - 14T
131	568913118	1	Seal Guard Assembly - 18T
131	568913121	1	Seal Guard Assembly - 21T
131	568913125	1	Seal Guard Assembly - 25T
131	568913128	1	Seal Guard Assembly - 28T & 32T

ADJUSTABLE LEG KITS (304 STAINLESS STEEL)

PART NUMBER	FRAME SIZE
56S56C	56C
56S140TC	143/145
56S180TC	182/184
56S210TC	213/215
56S250TC	254/256
56S280TC	284/286
56S320TC	324/326



*Spare parts recommended
See page 25 for spare part kits
EPDM and FKM elastomers available upon request