

M-159TG Mixing Unit-Hose Stations

Strahman **M-159** (bronze) and **M-750** (stainless steel) Mixing Units-Hose Stations are designed to thoroughly mix hot and cold water in any desired proportion. Available in both standard **M-159**, **M-750** and **M-159TG**, **M-750TG** Series .

Our Temperature Indicating (**TG**) models are equipped with a blending chamber and quick acting dial-type dual Fahrenheit and Centigrade temperature gauge, which accurately indicates the water's temperature exiting a specially designed blending chamber.

Specifications

Maximum water temperature: 200°F/93°C
Maximum working pressure: 150 psi steam

Standard: bronze, optional chrome-plated
Available: M-750, stainless steel

Standard with globe valves, available with ball valves

Simple visual recognition of valve position

F low rates adjustable from low to high

NOTE: Not suitable for steam service

Please see reverse side for parts listing.



*Shown: Bronze M-159TG with globe valves;
shown with premium hose assembly and M-70 Series nozzle
Available: Standard M-159, stainless steel M-750 and M-750TG*



USA Headquarters

Phone: 847-455-1686

Fax: 847-455-1706

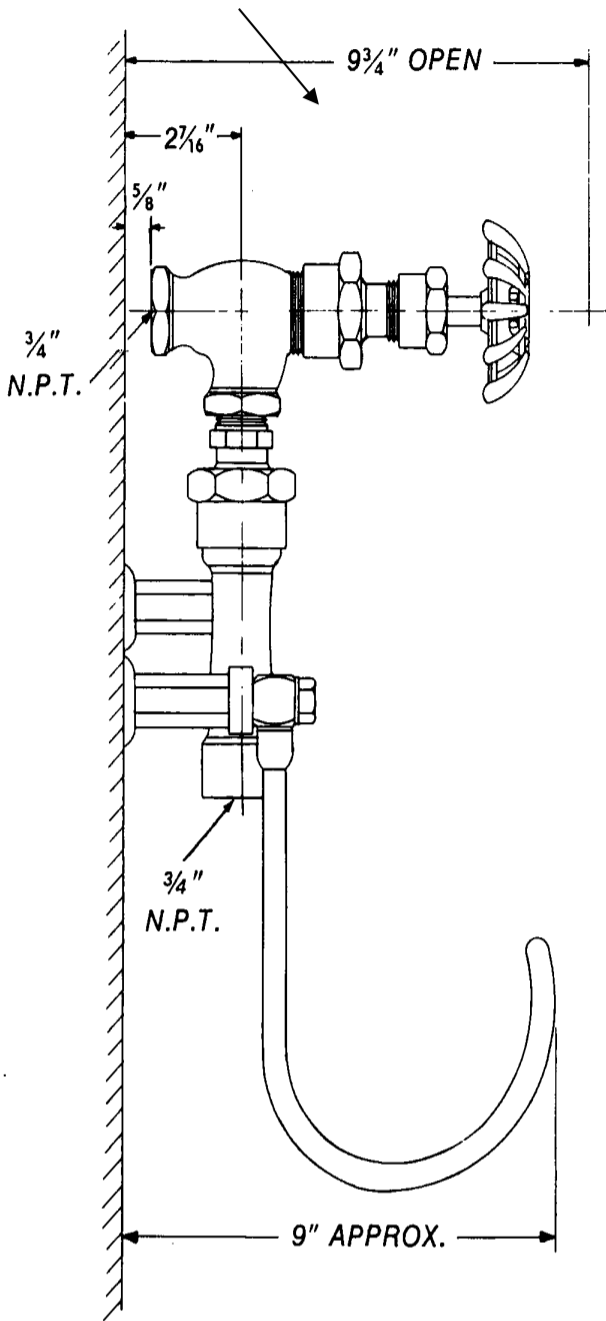
Toll Free: 800-424-5544

www.baldeweinco.com

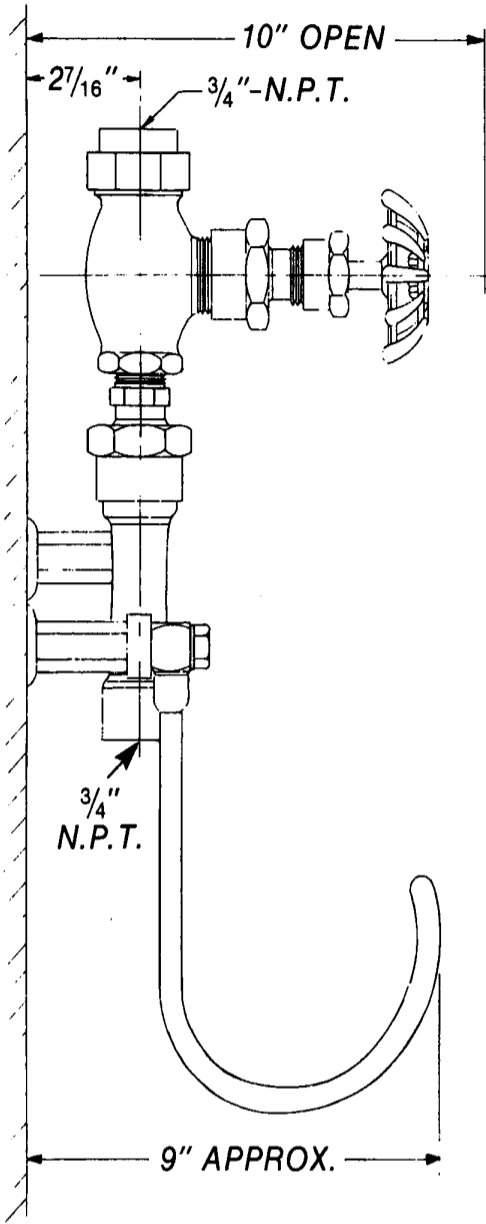
M-159TG Mixing Units-Hose Stations

Strahman

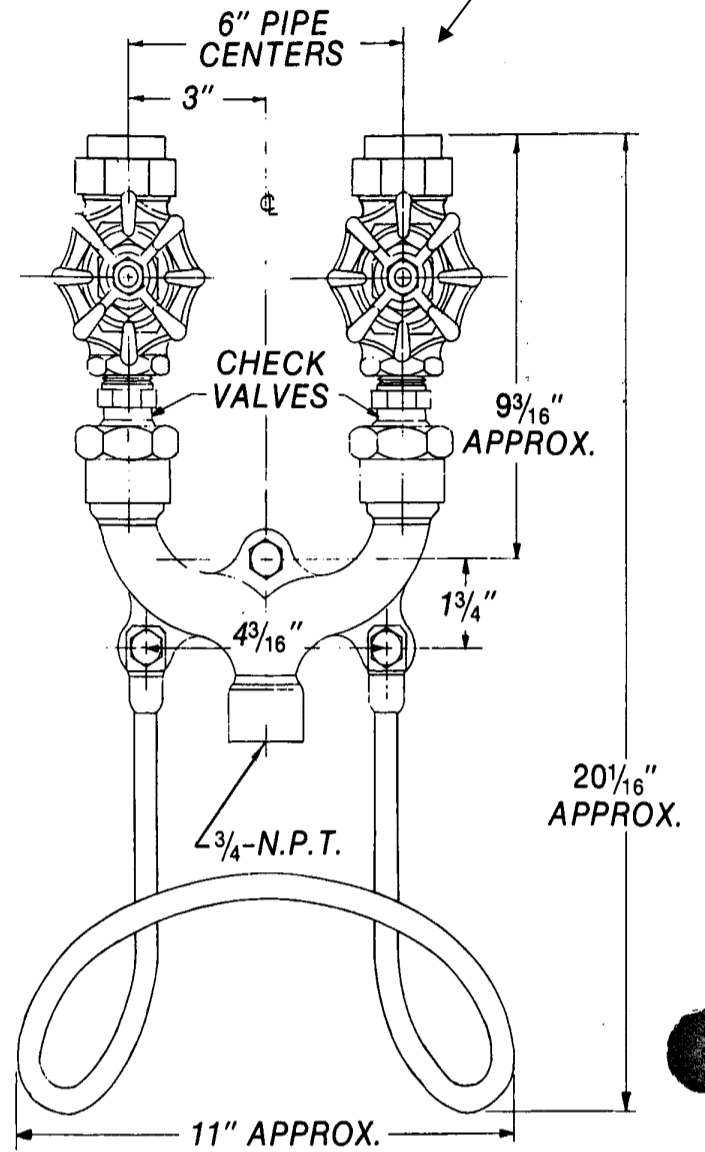
ANGLE VALVE - BACK ENTRY



MODEL M-159 WALL MOUNTED



GLOBE VALVE - TOP ENTRY

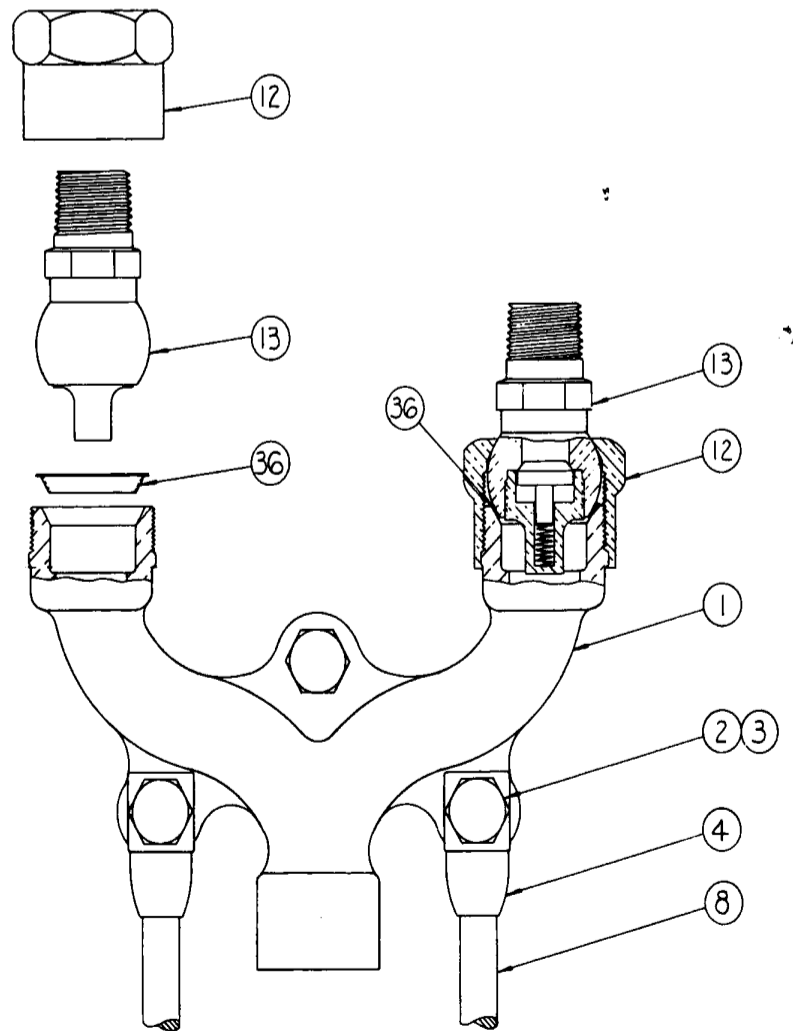


Note: Front view shown with Globe Valves

PARTS LIST MODEL M-159

Part No.	Part	Material
1	Body	Bronze
2	Cap Screw	Stainless Steel
3	Lock Washer	Stainless Steel
4	Connector	Brass
8	Hose Rack	Stainless Steel
10	Spacer (NOT SHOWN)	Stainless Steel
11	Wall Plate (NOT SHOWN)	Brass
12	Union Nut	Brass
*13	Ball Check Valve (Includes Part 36)	Brass/Stainless Steel Aluminum Silicon Bronze
36	Ball Check Gasket	Copper, Teflon Coated

*Sold as a complete unit.
See page 61 for control valve parts.



ORDER BY NAME AND NUMBER