

# M-750TG Mixing Units-Hose Stations

Strahman **M-159**(bronze) and **M-750**(stainless steel) Mixing Units-Hose Stations are designed to thoroughly mix hot and cold water in any desired proportion. Available in both standard **M-159** ,**M-750** and **M-159TG** ,**M-750TG** Series .

Our Temperature Indicating ( **TG** ) models are equipped with a blending chamber and quick acting dial-type dual Fahrenheit and Centigrade temperature gauge, which accurately indicates the water's temperature exiting a specially designed blending chamber.

## Specifications

**Maximum water temperature:** 200°F/93°C  
**Maximum working pressure:** 150 psi steam

Standard: stainless steel

Available: M-159, bronze

Simple visual recognition of valve position

Easy to maintain and replace globe valves

F low rates adjustable from low to high

Less wrist fatigue in turning valves to On/Off position

**NOTE:** Not suitable for steam service

*Please see reverse side for parts listing.*



*Shown: Stainless steel M-750TG with globe valves; shown with premium hose assembly and S-70 Series nozzle  
Available: Standard M-750, bronze M-159 and M-159TG*



Phone: 847-455-1686

Fax: 847-455-1706

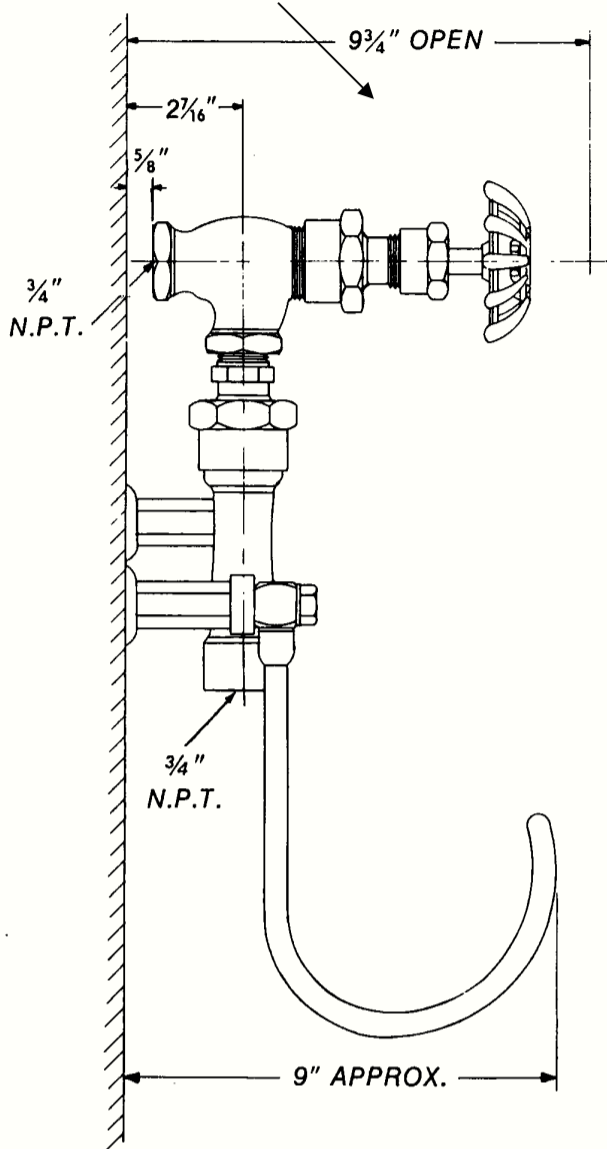
[www.baldeweinco.com](http://www.baldeweinco.com)

# M-750TG Mixing Units-Hose Stations

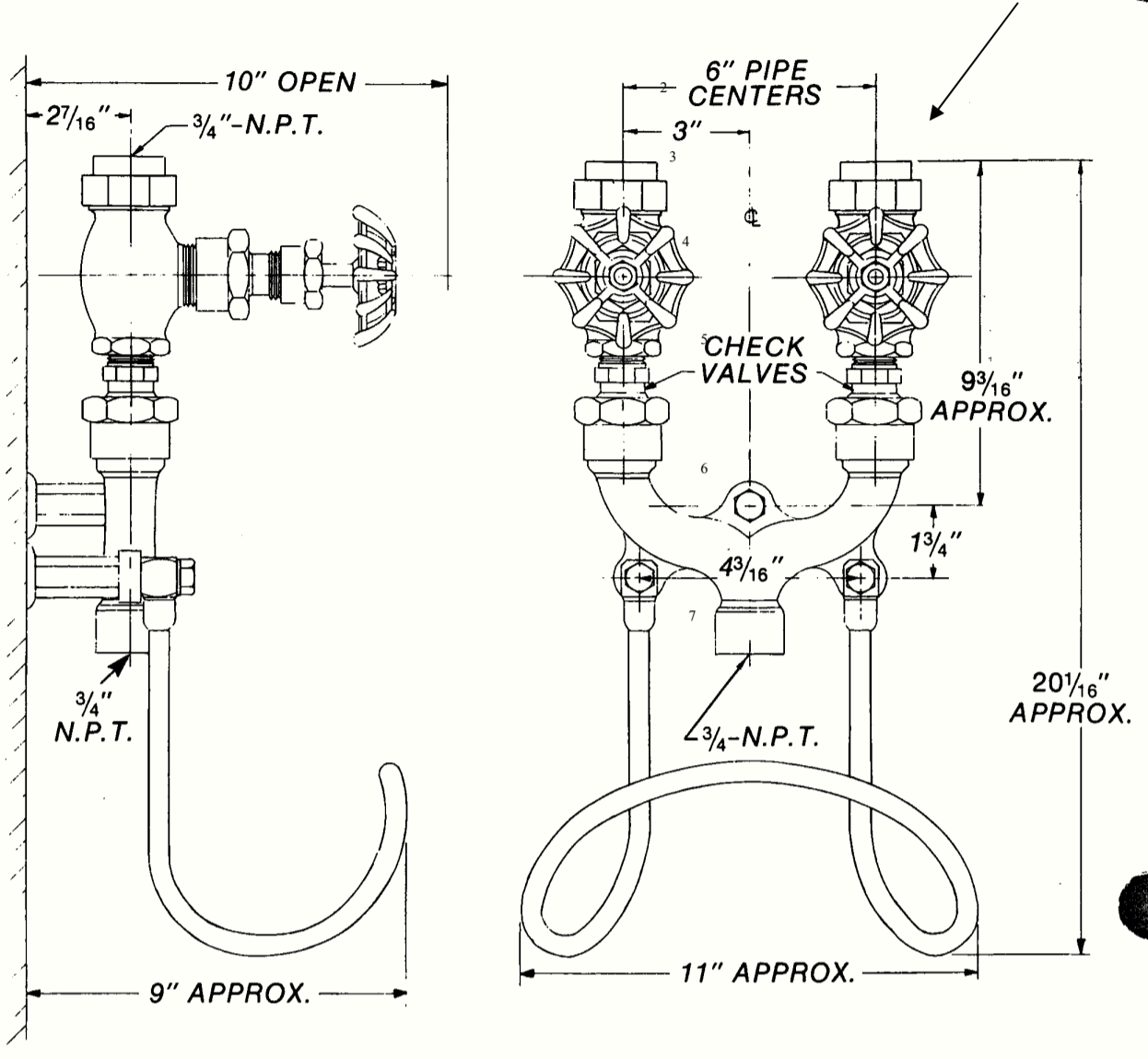
## Strahman

### MODEL M-159 WALL MOUNTED

#### ANGLE VALVE - BACK ENTRY



#### GLOBE VALVE - TOP ENTRY



#### PARTS

Note: Front view shown with Globe Valves

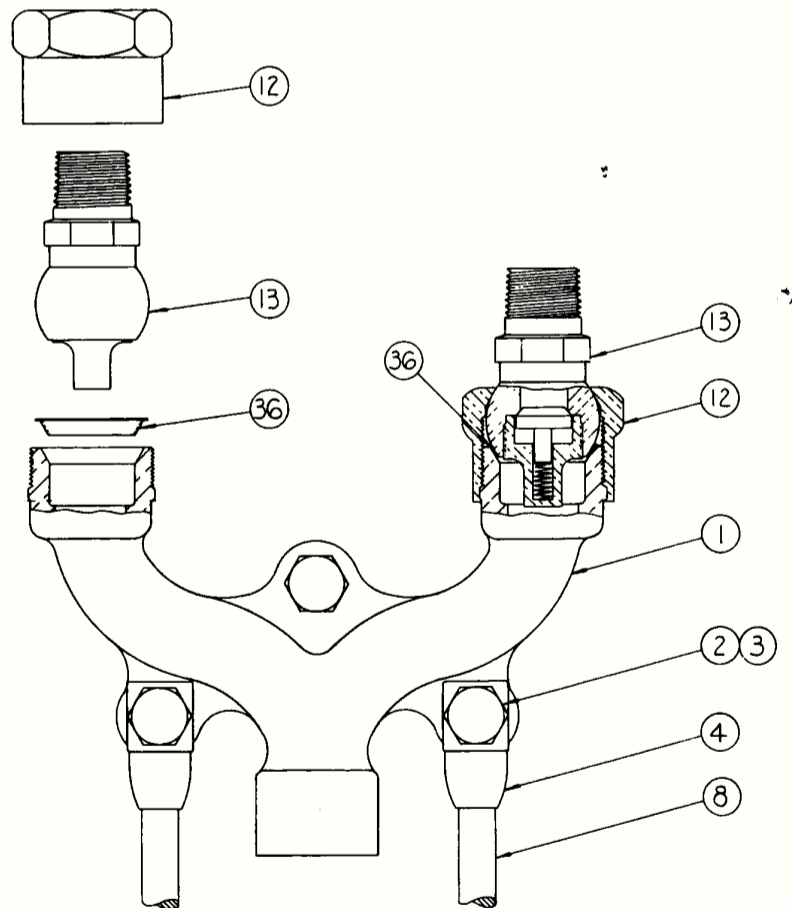
#### PART NO. PART

1

#### PARTS LIST MODEL M-159

Part No.	Part	Material
1	Body	Bronze
2	Cap Screw	Stainless Steel
3	Lock Washer	Stainless Steel
4	Connector	Brass
8	Hose Rack	Stainless Steel
10	Spacer (NOT SHOWN)	Stainless Steel
11	Wall Plate (NOT SHOWN)	Brass
12	Union Nut	Brass
*13	Ball Check Valve (Includes Part 36)	Brass/Stainless Steel Aluminum Silicon Bronze
36	Ball Check Gasket	Copper, Teflon Coated

\*Sold as a complete unit.  
See page 61 for control valve parts.



ORDER BY NAME AND NUMBER

[13]

BALDEWEINCO.COM  
847-455-1686